

金輪牌工業用縫紉機
GOLDEN WHEEL INDUSTRIAL SEWING MACHINE

零件分解圖

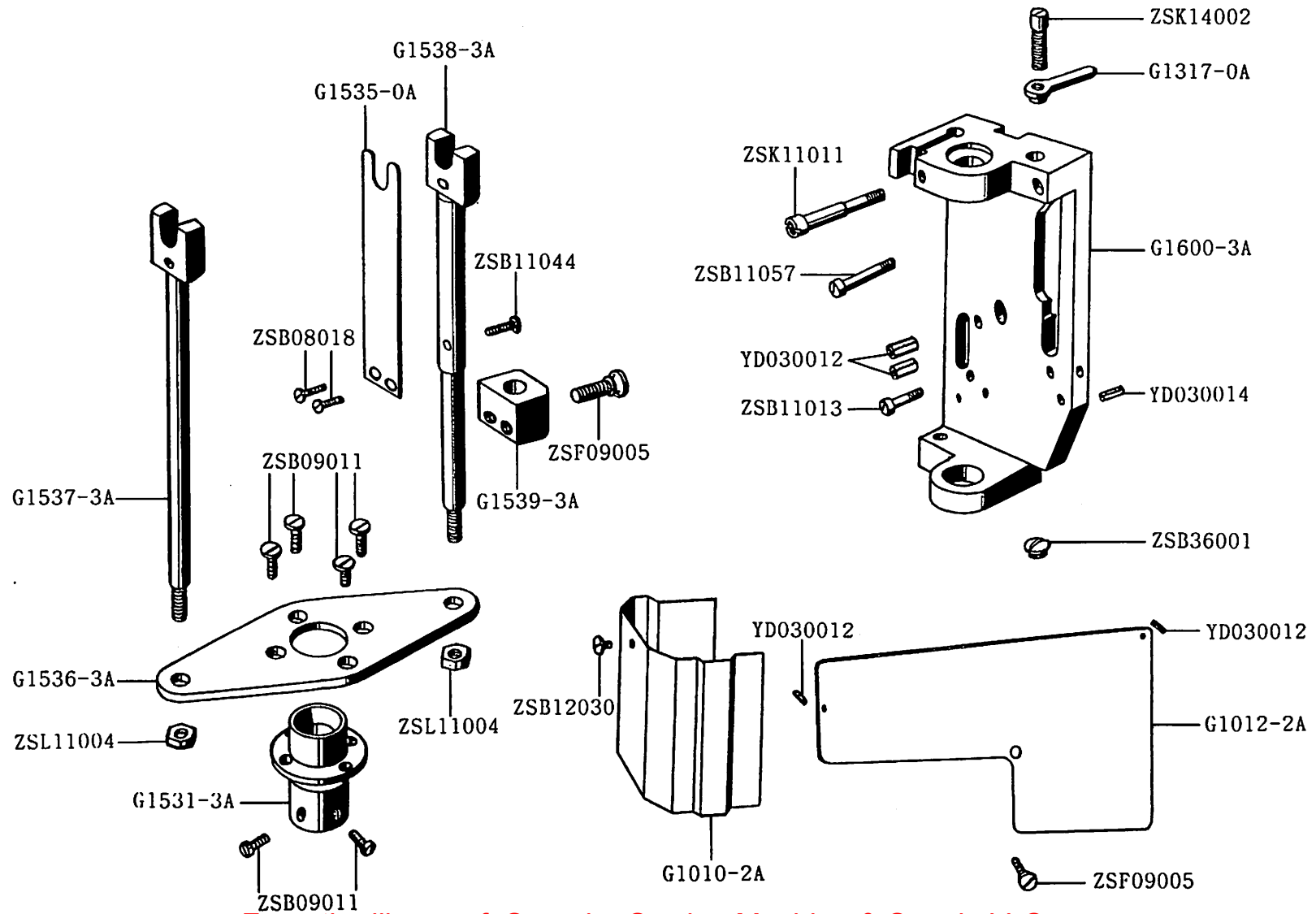
PARTS BOOK
MODEL : CS-530-3

啓翔股份有限公司
CHEE SIANG INDUSTRIAL CO., LTD.

MODEL : CS-530-3

索 引	INDEX	PAGE
一、本體、機座機構	MACHINE FRAME & COVERS & ARM HEAD MECHANISM	2~ 3
二、上軸機構	UPPER SHAFT MECHANISM	4~ 5
三、針棒機構	NEEDLE BAR MECHANISM	6~ 7
四、押腳機構	PRESSER FOOT MECHANISM	8~ 11
五、停止裝置機構	STOP BRACKET ASSEMBLY MECHANISM	12~ 13
六、線環器機構	LOOPER MECHANISM	14~ 15
七、線環器運轉機構	LOOPER OPERATING MECHANISM	16~ 17
八、縫線壓力調整機構	THREAD TENSION REGULATOR MECHANISM	18~ 19
九、旋轉把手車縫機構	STITCH ROTATING HAND LEVER MECHANISM	20~ 21
十、附件	ACCESSORIES	22~ 23
十一、零件號碼與頁數對照表 ...	NUMERICAL PARTS-LIST	24~ 26

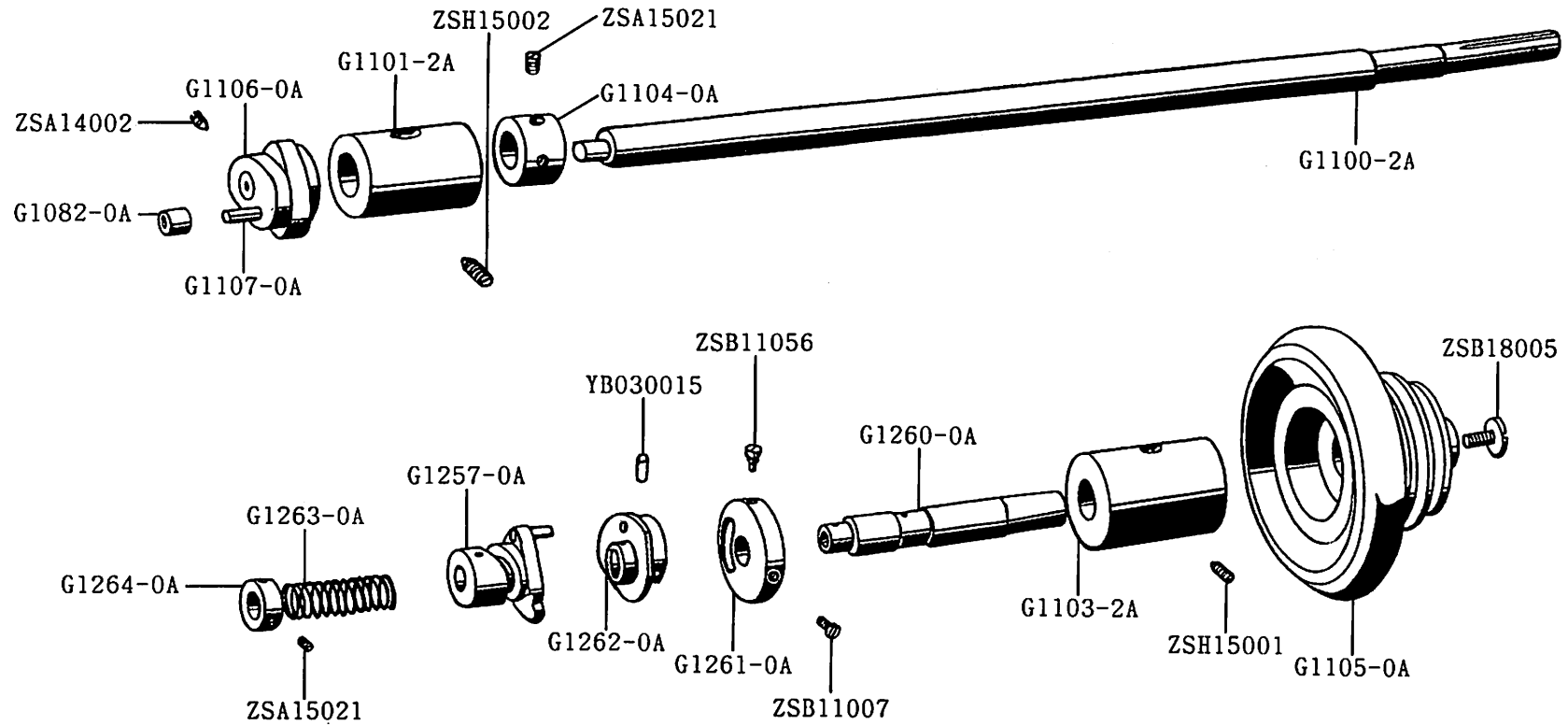
一、CS-530-3 本體、機座機構 MACHINE FRAME & COVERS & ARM HEAD MECHANISM



一、CS-530-3 本體、機座機構 MACHINE FRAME & COVERS & ARM HEAD MECHANISM

零件號碼 Part No.	零件名稱	Name of Part	件數 Q'TY	備註 Remarks
G1010-2A	面板	Arm Head Cover	1	
G1012-2A	前面板	Arm Side Cover	1	
G1317-0A	縫目調整固定桿	Feed Regulating Screw Lock Lever Nut	1	
G1531-3A	線軸支架	Spool Bracket	1	
G1535-0A	彈簧片	Spool Friction Spring	1	
G1536-3A	纏線架固定板	Spool Spindle Rod Plate	1	
G1537-3A	纏線架左支架	Spool Spindle Rod (small)	1	
G1538-3A	纏線架右支架	Spool Spindle Rod (large)	1	
G1539-3A	彈簧片固定塊	Spool Friction Spring Block	1	
G1600-3A	機座頭	Arm Head	1	
YD030012	定位銷	Position Pin	4	
YD030014	定位銷	Position Pin	2	
ZSB08018	螺絲	Screw	2	
ZSB09011	螺絲	Screw	6	
ZSB11013	螺絲	Screw	1	
ZSB11044	螺絲	Screw	1	
ZSB11057	螺絲	Screw	1	
ZSB12030	螺絲	Screw	1	
ZSB36001	螺絲	Screw	1	
ZSF09005	螺絲	Screw	2	
ZSK11011	螺絲	Screw	1	
ZSK14002	螺絲	Screw	1	
ZSL11004	螺帽	Nut	2	

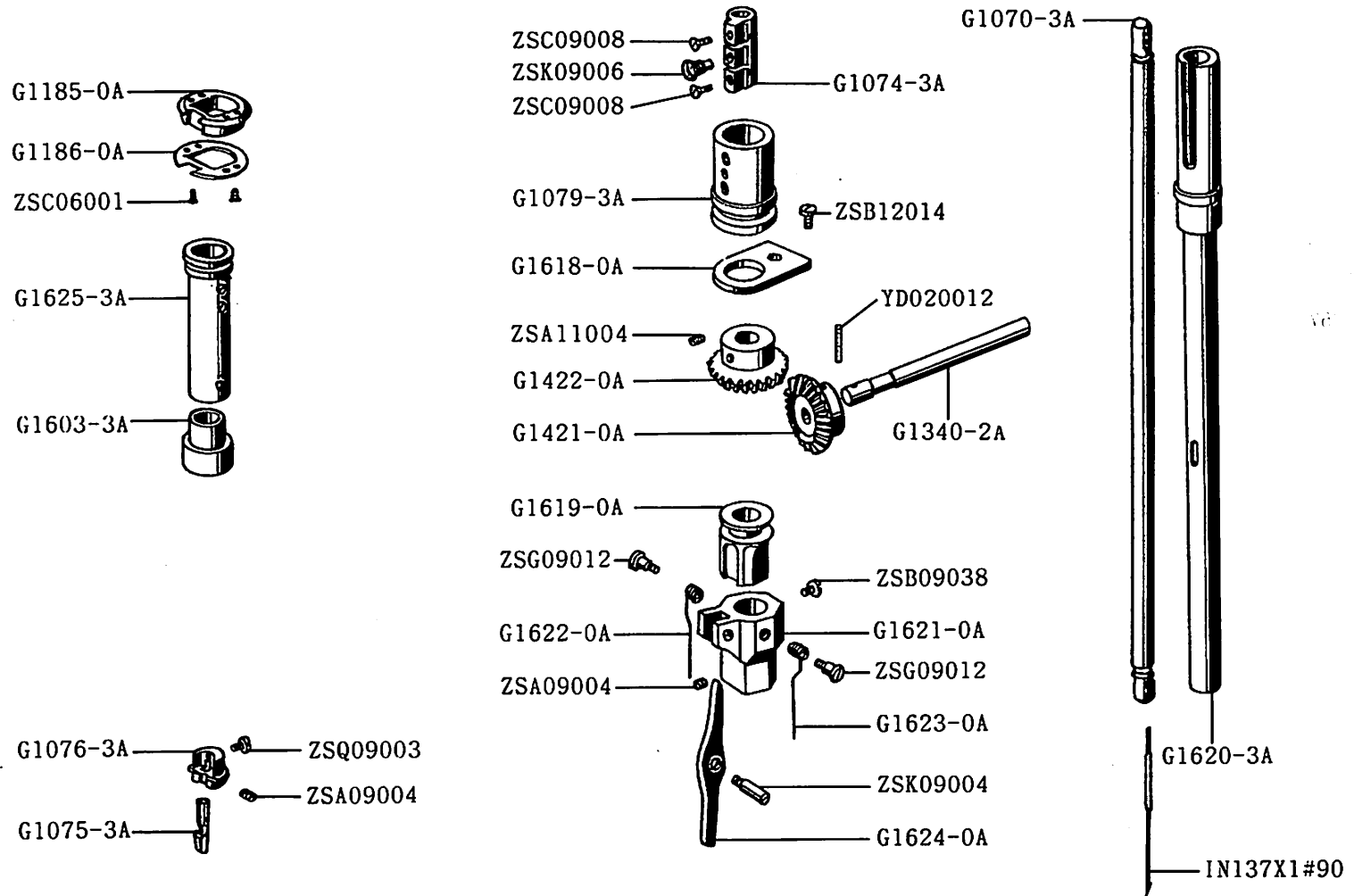
二CS-530-3 上軸機構 UPPER SHAFT MECHANISM



二、CS-530-3 上軸機構 UPPER SHAFT MECHANISM

零件號碼 Part No.	零件名稱	Name of Part	件數 Q'TY	備註 Remarks
G1082-0A	滾子	Needle Driving Cam Roller	1	
G1100-2A	上軸	Upper Shaft	1	
G1101-2A	上軸軸襯(左)	Arm Shaft Bushing (left)	1	
G1103-2A	上軸軸襯(右)	Driving Pulley Sleeve Bushing (right)	1	
G1104-0A	上軸定環	Arm Shaft Collar	1	
G1105-0A	皮帶輪	Driving Pulley	1	
G1106-0A	針驅動凸輪	Needle Driving Cam	1	
G1107-0A	凸輪固定銷	Needle Driving Cam Pin	1	
G1257-0A	止凸輪組	Stop Cam	1	
G1260-0A	皮帶輪軸套管	Driving Pulley Sleeve	1	
G1261-0A	驅動凸緣	Arm Shaft Driving Flange	1	
G1262-0A	偏心輪	Eccentric Cam	1	
G1263-0A	壓縮彈簧	Stop Cam Spring	1	
G1264-0A	彈簧固定環	Stop Cam Spring Collar	1	
YB030015	推拔銷	Taper Pin	1	
ZSA14002	螺絲	Screw	1	
ZSA15021	螺絲	Screw	4	
ZSB11007	螺絲	Screw	1	
ZSB11056	螺絲	Screw	1	
ZSB18005	螺絲	Screw	1	
ZSH15001	螺絲	Screw	1	
ZSH15002	螺絲	Screw	1	

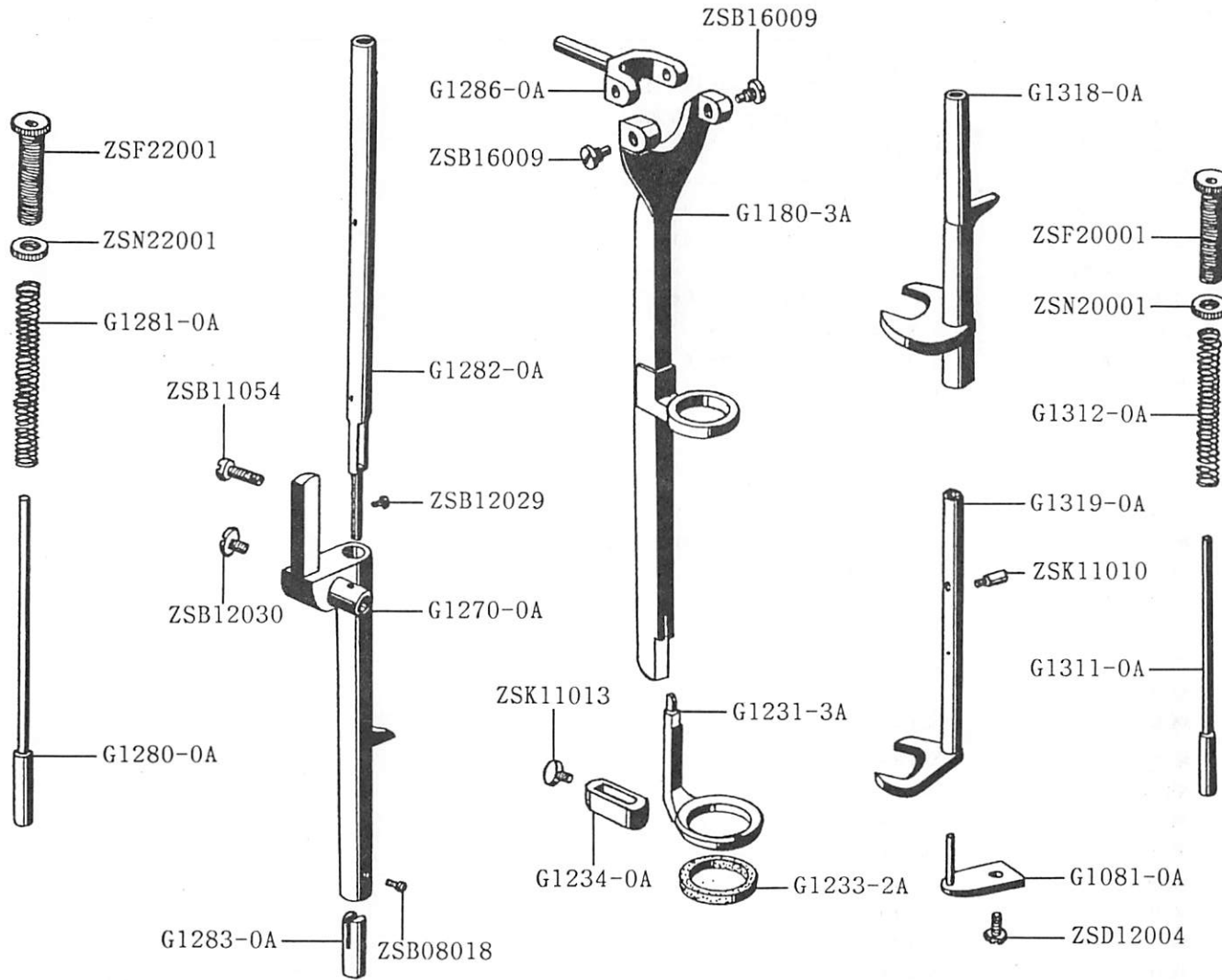
三CS-530-3 針棒機構 NEEDLE BAR MECHANISM



三CS-530-3 針棒機構 NEEDLE BAR MECHANISM

零件號碼 Part No.	零件名稱	Name of Part	件數 Q'TY	備註 Remarks
G1070-3A	針棒	Needle Bar	1	
G1074-3A	針棒拉基	Needle Holder Guide Block	1	
G1075-3A	針榴	Nipple(for Tape-Attaching)	1	
G1076-3A	針榴固定座	Nipple Holder	1	
G1079-3A	針棒導套	Needle Holder Operating Collar	1	
G1185-0A	送料桿引導座	Feed Lever Bracket Guide	1	
G1186-0A	送料桿引導座蓋	Feed Lever Bracket Guide Cap	1	
G1340-2A	送料旋轉軸	Feed Rotating Shaft	1	
G1421-0A	齒輪	Feed Rotating Shaft Gear	1	
G1422-0A	齒輪	Arm Head Sleeve Gear	1	
G1603-3A	套管軸襯	Nipple Carrier Sleeve Bushing	1	
G1618-0A	套管定位板	Arm Head Sleeve Cap	1	
G1619-0A	送料滑塊	Feed Slide Block	1	
G1620-3A	針棒軸套	Arm Head Sleeve	1	
G1621-0A	送料桿座	Feed Lever Bracket	1	
G1622-0A	托架彈簧(左)	Feed Recovering Spring (left)	1	
G1623-0A	托架彈簧(右)	Feed Recovering Spring (right)	1	
G1624-0A	送料桿	Feed Lever	1	
G1625-3A	針榴套軸套管	Nipple Carrier Sleeve with Screws	1	
IN137X1=90	針	Needle	1	
YD020012	彈簧銷	Position Pin	1	
ZSA09004	螺絲	Screw	2	
ZSA11004	螺絲	Screw	1	
ZSB09038	螺絲	Screw	1	
ZSB12014	螺絲	Screw	1	
ZSC06001	螺絲	Screw	2	
ZSC09008	螺絲	Screw	2	
ZSG09012	螺絲	Screw	2	
ZSK09004	螺絲	Screw	1	
ZSK09006	螺絲	Screw	1	
ZSQ09003	螺絲	Screw	1	

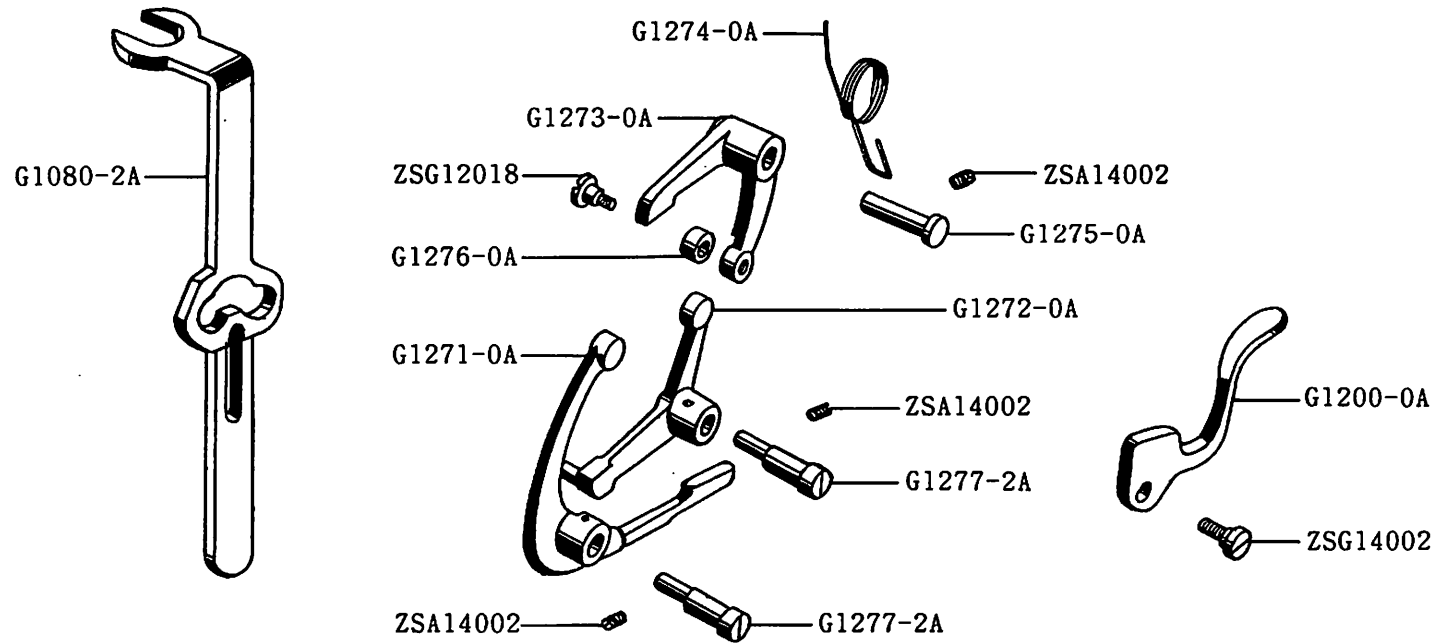
四CS-530-3 押腳機構 PRESSER FOOT MECHANISM



四CS-530-3 押腳機構 PRESSER FOOT MECHANISM

零件號碼 Part No.	零件名稱	Name of Part	件數 Q'TY	備註 Remarks
G1081-0A	針榴導套	Nipple Carrier Guide	1	
G1180-3A	押腳導桿組	Presser Foot Lever with Feed Lever Bracket Guide Bearing and Pin	1	
G1231-3A	押腳	Presser Foot	1	
G1233-2A	押腳橡膠墊	Presser Foot Shoe (rubber)	1	
G1234-0A	押腳固定環	Presser Foot Clamp	1	
G1270-0A	押腳滑棒	Presser Foot Slide Bar	1	
G1280-0A	壓縮彈簧導桿	Presser Foot Slide Bar Spring Plunger	1	
G1281-0A	壓縮彈簧	Presser Foot Slide Bar Spring	1	
G1282-0A	押棒導桿	Presser Foot Slide Bar Guide	1	
G1283-0A	押棒彈簧停止塊	Presser Foot Slide Bar Spring Stop	1	
G1286-0A	Y型連桿	Presser Foot Lever Swivel	1	
G1311-0A	壓縮彈簧導桿	Nipple Carrier Extension	1	
G1312-0A	壓縮彈簧	Nipple Carrier Spring	1	
G1318-0A	送料滑桿	Feed Slide Bar	1	
G1319-0A	針榴導桿組	Nipple Carrier	1	
ZSB08018	螺絲	Screw	1	
ZSB11054	螺絲	Screw	1	
ZSB12029	螺絲	Screw	1	
ZSB12030	螺絲	Screw	1	
ZSB16009	螺絲	Screw	2	
ZSD12004	螺絲	Screw	1	
ZSF20001	螺絲	Screw	1	
ZSF22001	螺絲	Screw	1	
ZSK11010	螺絲	Screw	1	
ZSK11013	螺絲	Screw	1	
ZSN20001	螺帽	Nut	1	
ZSN22001	螺帽	Nut	1	

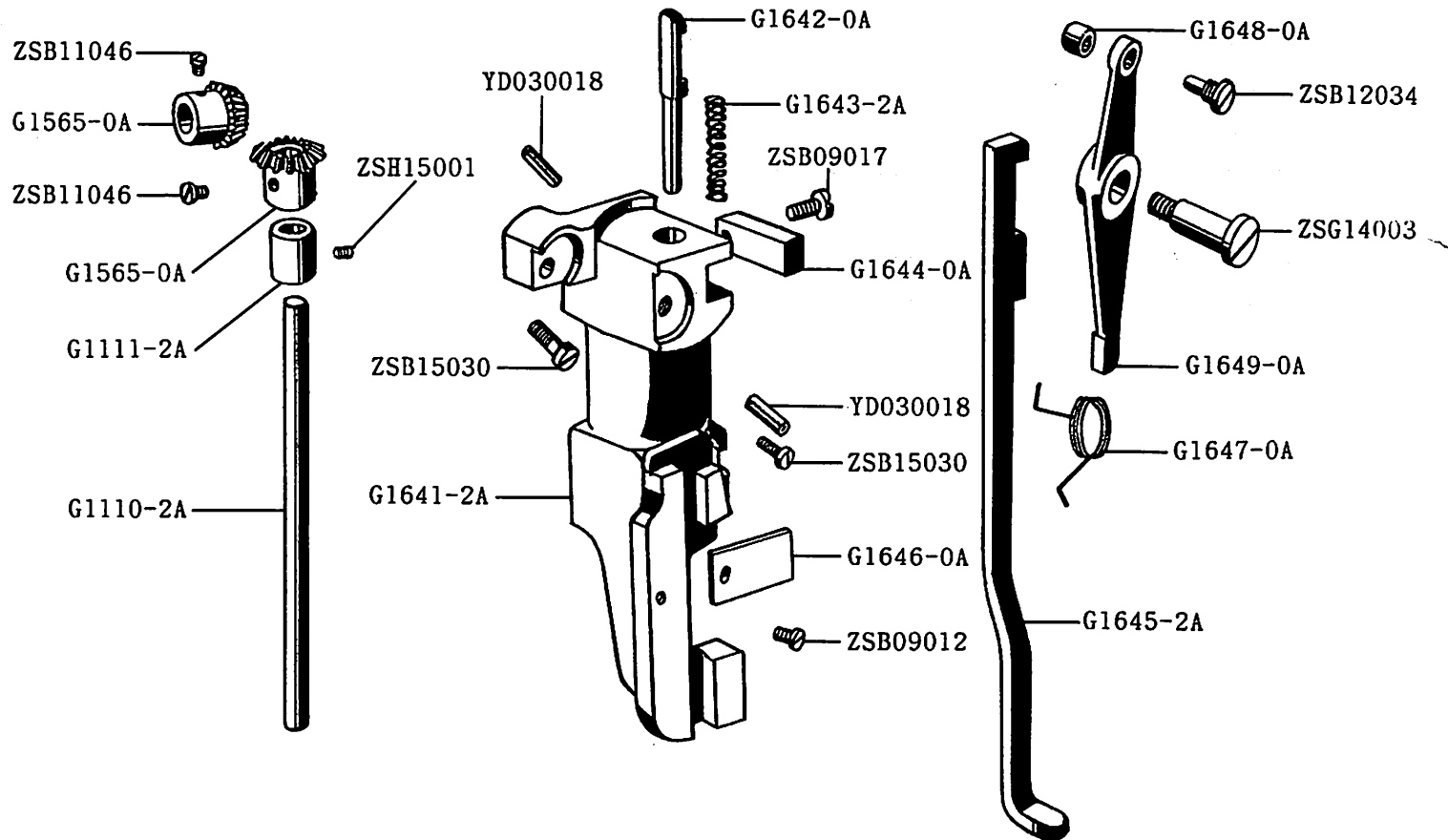
四CS-530-3 押腳機構 PRESSER FOOT MECHANISM



四CS-530-3 押腳機構 PRESSER FOOT MECHANISM

零件號碼 Part No.	零件名稱	Name of Part	件數 Q'TY	備註 Remarks
G1080-2A	針棒導板	Needle Operating Slide	1	
G1200-0A	壓棒提桿	Presser Foot Lifter	1	
G1271-0A	押腳滑動曲柄	Presser Foot Slide Bell Crank	1	
G1272-0A	針榴導桿曲柄	Nipple Carrier Bell Crank	1	
G1273-0A	送料曲柄	Feed Bell Crank	1	
G1274-0A	扭轉彈簧	Feed Bell Crank Spring	1	
G1275-0A	固定銷	Feed Bell Crank Hinge Stud	1	
G1276-0A	送料曲柄滾子	Feed Bell Crank Roller	1	
G1277-2A	固定銷	Nipple Carrier Bell Crank Hinge Stud	2	
ZSA14002	螺絲	Screw	3	
ZSG12018	螺絲	Screw	1	
ZSG14002	螺絲	Screw	1	

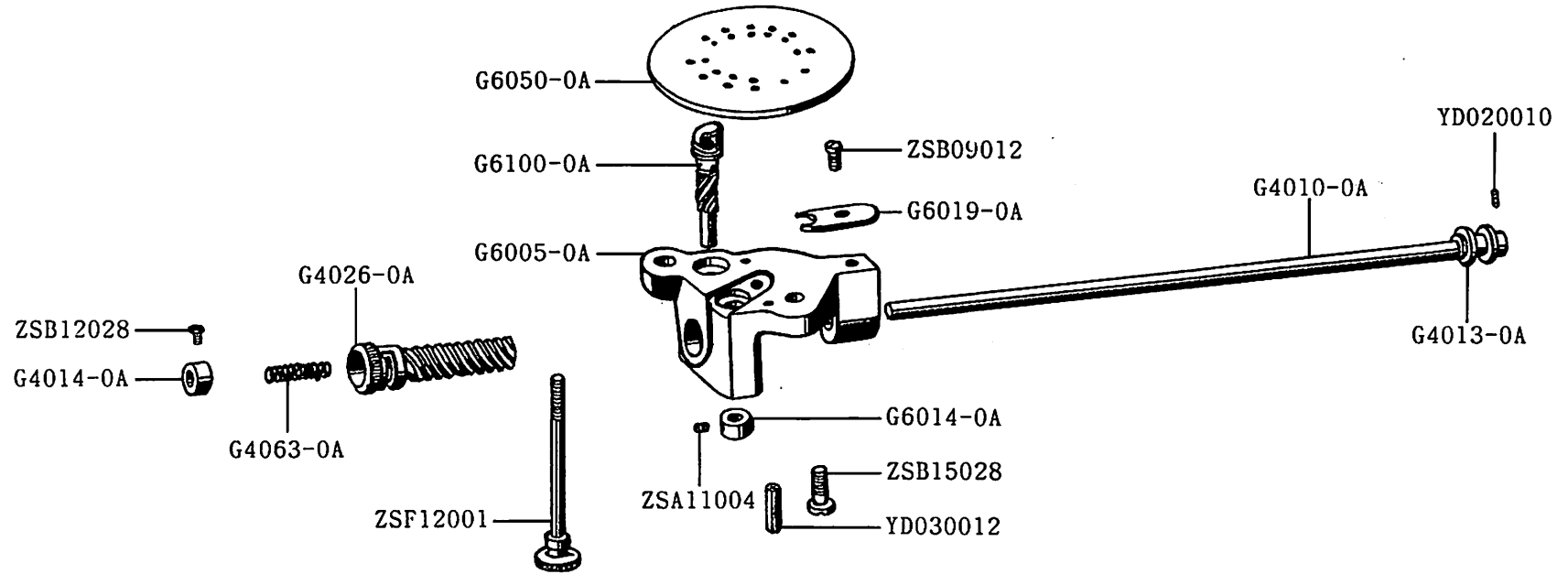
五CS-530-3 停止裝置機構 STOP BRACKET ASSEMBLY MECHANISM



五CS-530-3 停止裝置機構 STOP BRACKET ASSEMBLY MECHANISM

零件號碼 Part No.	零件名稱	Name of Part	件數 Q'TY	備註 Remarks
G1110-2A	針柱旋轉軸	Stitch Rotating Gear Shaft	1	
G1111-2A	針柱旋轉軸軸襯	Stitch Rotating Gear Shaft Bushing	1	
G1565-0A	齒輪	Stitch Rotating Gear (upper) with Set Screw	2	
G1641-2A	止動托架	Stop Bracket	1	
G1642-0A	止擋桿	Stop Bracket Interlocking Rod	1	
G1643-2A	壓縮彈簧	Stop Bracket Interlocking Rod Spring	1	
G1644-0A	止擋銷固定塊	Stop Bracket Interlocking Stop Block	1	
G1645-2A	起動桿	Starting Trip Lever Slide	1	
G1646-0A	起動桿固定板	Starting Trip Lever Slide Cap	1	
G1647-0A	彈簧	Starting Trip Lever Slide Spring	1	
G1648-0A	止擋套管	Stop Cam Roller	1	
G1649-0A	止擋槓桿	Stop Cam Rocking Lever	1	
YD030018	彈簧銷	Spring Pin	2	
ZSB09012	螺絲	Screw	1	
ZSB09017	螺絲	Screw	1	
ZSB11046	螺絲	Screw	2	
ZSB12034	螺絲	Screw	1	
ZSB15030	螺絲	Screw	2	
ZSG14003	螺絲	Screw	1	
ZSH15001	螺絲	Screw	1	

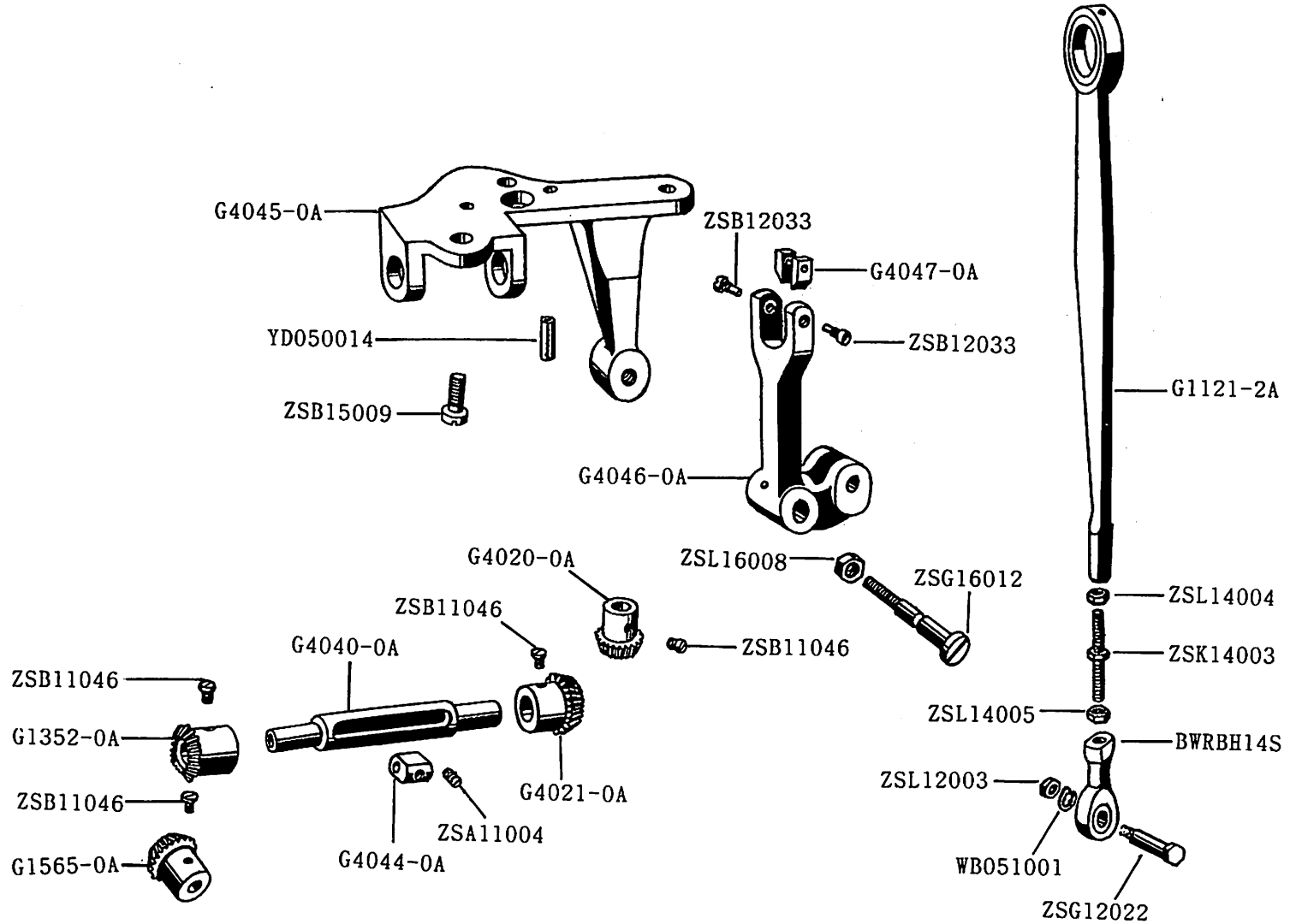
六CS-530-3 線環器機構 LOOPER MECHANISM



六CS-530-3 線環器機構 LOOPER MECHANISM

零件號碼 Part No.	零件名稱	Name of Part	件數 Q'TY	備註 Remarks
G4010-0A	下軸	Looper Operating Shaft	1	
G4013-0A	下軸套輪	Looper Operating Shaft Sleeve Wheel	1	
G4014-0A	定環	Looper Operating Collar	1	
G4026-0A	齒輪	Looper Operating Gear (spiral)	1	
G4063-0A	彈簧	Looper Operating Gear Spring	1	
G6005-0A	線環器座	Looper Bracket	1	
G6014-0A	定環	Looper Collar	1	
G6019-0A	定位板	Looper Position Plate	1	
G6050-0A	針板	Needle Plate	1	
G6100-0A	線環器	Looper	1	
YD020010	彈簧銷	Spring Pin	1	
YD030012	彈簧銷	Spring Pin	2	
ZSA11004	螺絲	Screw	1	
ZSB09012	螺絲	Screw	1	
ZSB12028	螺絲	Screw	1	
ZSB15028	螺絲	Screw	3	
ZSF12001	螺絲	Screw	1	

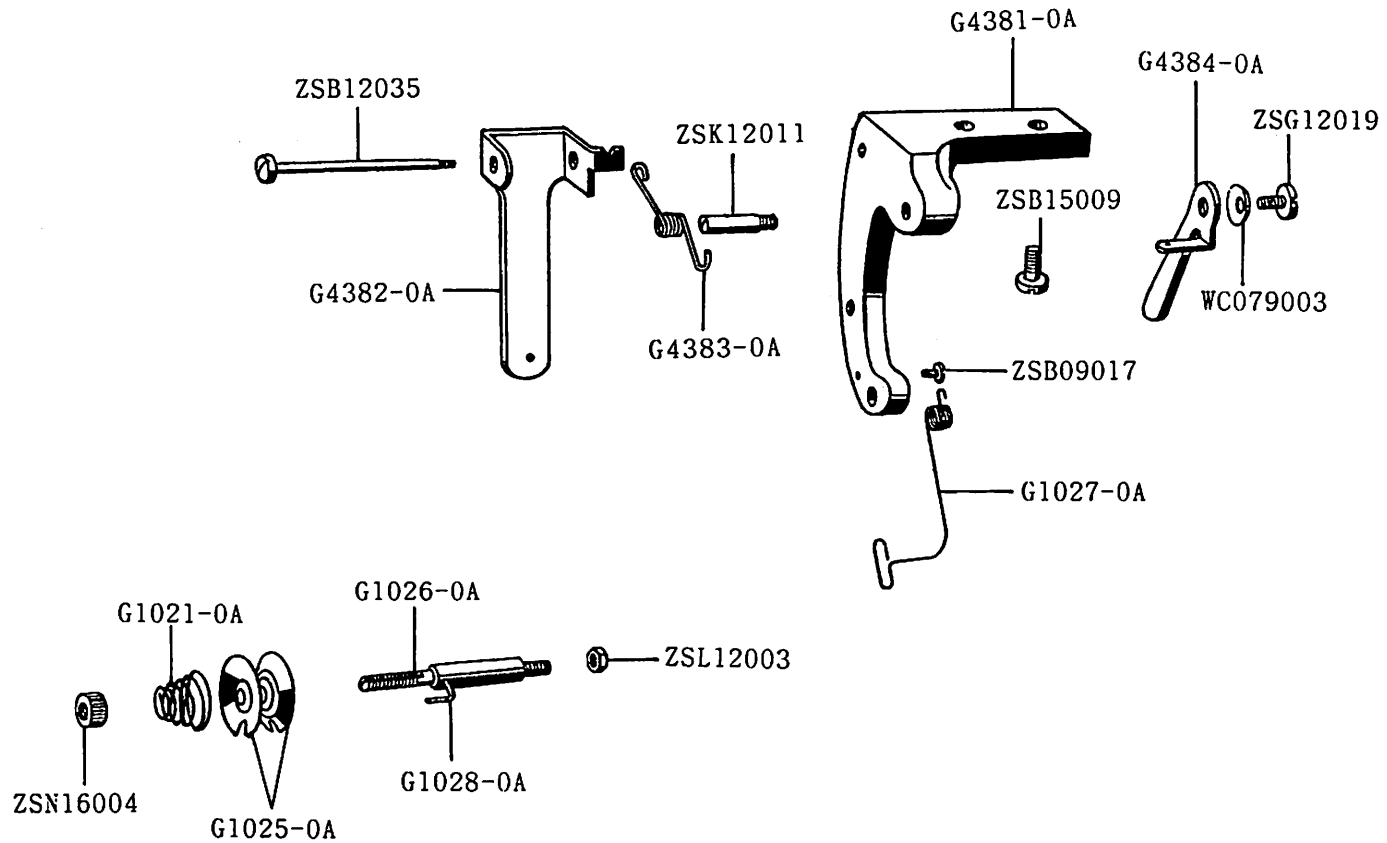
七CS-530-3 線環器運轉機構 LOOPER OPERATING MECHANISM



七CS-530-3 線環器運轉機構 LOOPER OPERATING MECHANISM

零件號碼 Part No.	零件名稱	Name of Part	件數 Q'TY	備註 Remarks
BWRBH14S	桿端軸承	Looper Operating Connection Joint	1	
G1121-2A	連桿	Looper Operating Connection (Cam end)	1	
G1352-0A	套管齒輪	Looper Operating Shaft Sleeve and Gear with Set Screw	1	
G1565-0A	齒輪	Stitch Rotating Gear Bracket Shaft Gear	1	
G4020-0A	齒輪	Stitch Rotating Gear Bracket Shaft Gear	1	
G4021-0A	套管齒輪	Looper Operating Shaft Sleeve and Gear with Set Screw	1	
G4040-0A	旋轉套環軸	Looper Operating Shaft Guide	1	
G4044-0A	滑動塊	Looper Operating Shaft Guide Block	1	
G4045-0A	固定架	Looper Operating Bell Crank Bracket	1	
G4046-0A	L型連桿	Looper Operating Bell Crank	1	
G4047-0A	滑塊	Looper Operating Bell Crank Hinge Block	2	
WB051001	彈簧墊圈	Spring Washer	1	
YD050014	彈簧銷	Spring Pin	2	
ZSA11004	螺絲	Screw	1	
ZSB11046	螺絲	Screw	4	
ZSB12033	螺絲	Screw	2	
ZSB15009	螺絲	Screw	3	
ZSG12022	螺絲	Screw	1	
ZSG16012	螺絲	Screw	1	
ZSK14003	螺絲	Screw	1	
ZSL12003	螺帽	Nut	1	
ZSL14004	螺帽	Nut	1	
ZSL14005	螺帽	Nut	1	
ZSL16008	螺帽	Nut	1	

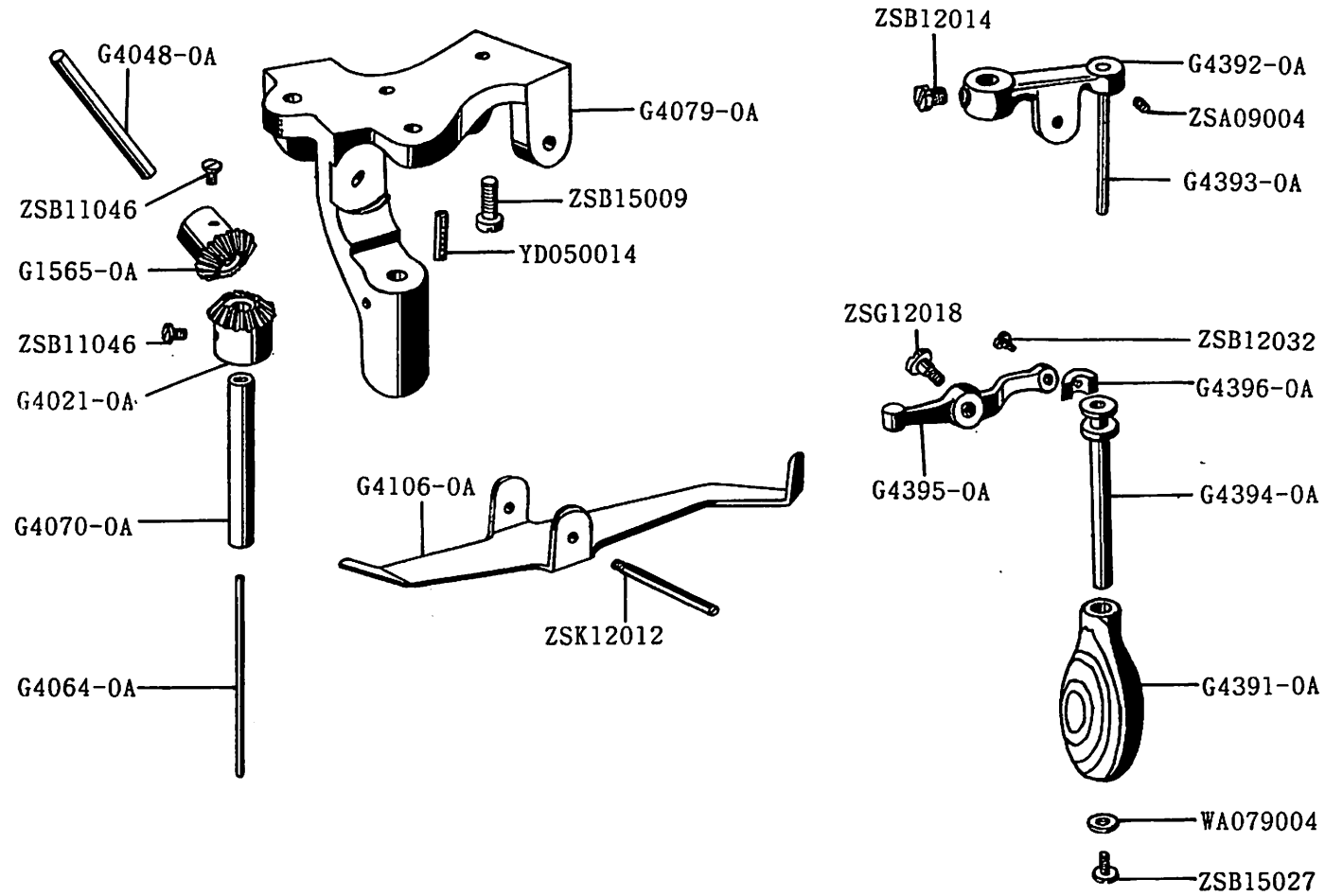
八CS-530-3 縫線壓力調整機構 THREAD TENSION REGULATOR MECHANISM



八CS-530-3 縫線壓力調整機構 THREAD TENSION REGULATOR MECHANISM

零件號碼 Part No.	零件名稱	Name of Part	件數 Q'TY	備註 Remarks
G1021-0A	調整彈簧	Tension Spring	1	
G1025-0A	壓線盤	Tension Disc	2	
G1026-0A	調整螺絲棒	Tension Stud	1	
G1027-0A	吊線彈簧	Thread Controller Spring	1	
G1028-0A	銷	Tension Releasing Pin	1	
G4381-0A	線掛支架	Tension Bracket	1	
G4382-0A	線掛壓板	Tension Regulating Plate	1	
G4383-0A	扭轉彈簧	Tension Regulating Spring	1	
G4384-0A	壓力調整桿	Tension Regulating Lever	1	
WC079003	盤形墊圈	Washer	1	
ZSB09017	螺絲	Screw	1	
ZSB12035	螺絲	Screw	1	
ZSB15009	螺絲	Screw	2	
ZSG12019	螺絲	Screw	1	
ZSK12011	螺絲	Screw	1	
ZSL12003	螺帽	Nut	1	
ZSN16004	螺帽	Nut	1	

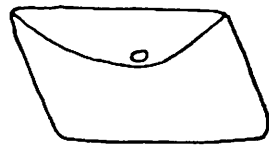
九CS-530-3 旋轉把手車縫機構 STITCH ROTATING HAND LEVER MECHANISM



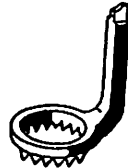
九CS-530-3 旋轉把手車縫機構 STITCH ROTATING HAND LEVER MECHANISM

零件號碼 Part No.	零件名稱	Name of Part	件數 Q'TY	備註 Remarks
G1565-0A	齒輪	Stitch Rotating Gear Bracket Shaft Gear	1	
G4021-0A	齒輪	Stitch Rotating Hand Lever Shaft Gear	1	
G4048-0A	正逆轉控制軸	Stitch Rotating Gear Bracket Shaft (intermediate)	1	
G4064-0A	導銷	Starting Trip Lever Rod	1	
G4070-0A	方向控制搖動軸	Stitch Rotating Hand Lever Shaft	1	
G4079-0A	旋轉送料軸座	Stitch Rotating Gear Bracket	1	
G4106-0A	起動製桿	Startin Trip Lever (intermediate)	1	
G4391-0A	握柄	Stitch Rotating Hand Lever Handle	1	
G4392-0A	送齒回轉手把	Stitch Rotating Hand Lever with Set Screw	1	
G4393-0A	固定軸	Fixing Rod	1	
G4394-0A	握柄支軸套管	Stitch Rotating Hand Lever Handle Sleeve	1	
G4395-0A	起動桿	Starting Trip Lever	1	
G4396-0A	起動片	Starting Trip Lever Block	1	
WA079004	平墊圈	Washer	1	
YD050014	彈簧銷	Spring Pin	1	
ZSA09004	螺絲	Screw	1	
ZSB11046	螺絲	Screw	2	
ZSB12014	螺絲	Screw	1	
ZSB12032	螺絲	Screw	1	
ZSB15009	螺絲	Screw	3	
ZSB15027	螺絲	Screw	1	
ZSG12018	螺絲	Screw	1	
ZSK12012	螺絲	Screw	1	

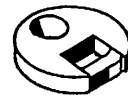
CS-530-3 附件 ACCESSORIES



A7000-0A



G1231-4A



G7022-0A



A7012-1A



G7141-0A



C7001-0A



G7021-0A



A7025-0A



ZMT06001



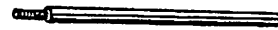
G7140-0A



G7013-0A



A7026-0A



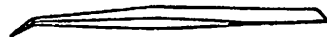
ZSK12013



G1233-2A



ZSK18007



G7014-0A



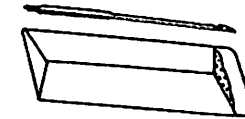
WA079004



ZSK18008



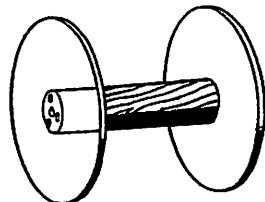
A7011-0A



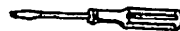
IN137X1#90



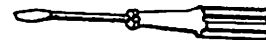
G7120-0A



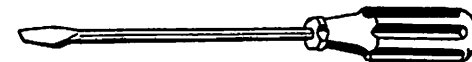
G1520-0A



A7010-0A



A7010-1A



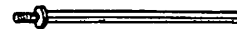
A7010-2A



ZSN15001



WA069011



G1525-0A



G7121-0A

十、CS-530-3 附件 ACCESSORIES

零件號碼 Part No.	零件名稱	Name of Part	件數 QTY	備註 Remarks
A7000-0A	工具袋	Accessory Bag	1	
A7010-0A	螺絲起子(小)	Screw Driver (Small)	1	
A7010-1A	螺絲起子(中)	Screw Driver (Middle)	1	
A7010-2A	螺絲起子(大)	Screw Driver (Large)	1	
A7011-0A	鐵釘	Nail	10	
A7012-1A	油壺(中)	Oiler (Middle)	1	
A7025-0A	枕木	Machine Rest Pin (Wood)	1	
A7026-0A	橡膠墊	Vibration Preventing Rubbers	4	
C7001-0A	車頭蓋	Vinyl Cover	1	
G1231-4A	押腳	Presser Foot (Spur)	1	
G1233-2A	橡膠墊	Presser Foot Shoe (Rubber)	3	
G1520-0A	捲線座組	Spool	1	
G1525-0A	固定軸	Spool Spindle	1	
G7013-0A	尖嘴鉗	Pliers	1	
G7014-0A	鑷子	Tweezers	1	
G7021-0A	後鈕	Machine Hinge Connection	2	
G7022-0A	後鈕座	Machine Hinge Connection Seat	2	
G7120-0A	勾線鐵絲	Threader Wire	1	
G7121-0A	清潔鐵絲	Cleaning Wire	1	
G7140-0A	洋眼	Screw Eye	3	
G7141-0A	六角把手(3mm)	Wrench (3m/m)	1	
IN137X1#90	針	Needle	2	
WA069011	平墊圈	Washer	1	
WA079004	平墊圈	Washer	1	
ZMT06001	螺絲	Screw	2	
ZSK12013	線軸螺桿	Spool Screw Stud	1	
ZSK18007	螺栓	Bed Clamping Thumb Screw	2	
ZSK18008	繞線桿	Spool Winder Spindle	1	
ZSN15001	螺帽	Nut	1	

零件號碼 PART NO.	頁數 PAGE	零件號碼 PART NO.	頁數 PAGE	零件號碼 PART NO.	頁數 PAGE	零件號碼 PART NO.	頁數 PAGE
A7000-0A	22	G1100-2A	4	G1271-0A	10	G1536-3A	2
A7010-0A	22	G1101-2A	4	G1272-0A	10	G1537-3A	2
A7010-1A	22	G1103-2A	4	G1273-0A	10	G1538-3A	2
A7010-2A	22	G1104-0A	4	G1274-0A	10	G1539-3A	2
A7011-0A	22	G1105-0A	4	G1275-0A	10	G1565-0A	12、16、20
A7012-1A	22	G1106-0A	4	G1276-0A	10	G1600-3A	2
A7025-0A	22	G1107-0A	4	G1277-2A	10	G1603-3A	6
A7026-0A	22	G1110-2A	12	G1280-0A	8	G1618-0A	6
BWRBH14S	16	G1111-2A	12	G1281-0A	8	G1619-0A	6
C7001-0A	22	G1121-2A	16	G1282-0A	8	G1620-3A	6
G1010-2A	2	G1180-3A	8	G1283-0A	8	G1621-0A	6
G1012-2A	2	G1185-0A	6	G1286-0A	8	G1622-0A	6
G1021-0A	18	G1186-0A	6	G1311-0A	8	G1623-0A	6
G1025-0A	18	G1200-0A	10	G1312-0A	8	G1624-0A	6
G1026-0A	18	G1231-4A	22	G1317-0A	2	G1625-3A	6
G1027-0A	18	G1231-4A	2	G1318-0A	8	G1641-2A	12
G1028-0A	18	G1233-2A	8、22	G1319-0A	8	G1642-0A	12
G1070-3A	6	G1234-0A	8	G1340-2A	6	G1643-2A	12
G1074-3A	6	G1257-0A	4	G1352-0A	16	G1644-0A	12
G1075-3A	6	G1260-0A	4	G1421-0A	6	G1645-2A	12
G1076-3A	6	G1261-0A	4	G1422-0A	6	G1646-0A	12
G1079-3A	6	G1262-0A	4	G1520-0A	22	G1647-0A	12
G1080-2A	10	G1263-0A	4	G1525-0A	22	G1648-0A	12
G1081-0A	8	G1264-0A	4	G1531-3A	2	G1649-0A	12
G1082-0A	4	G1270-0A	8	G1535-0A	2	G4010-0A	14

零件號碼 PART NO.	頁數 PAGE	零件號碼 PART NO.	頁數 PAGE	零件號碼 PART NO.	頁數 PAGE	零件號碼 PART NO.	頁數 PAGE
G4013-0A	14	G4396-0A	20	YD050014	16、20	ZSB12035	18
G4014-0A	14	G6005-0A	14	ZMT06001	22	ZSB15009	16、18、20
G4020-0A	16	G6014-0A	14	ZSA09004	6、20	ZSB15027	20
G4021-0A	16、20	G6019-0A	14	ZSA11004	6、14、16	ZSB15028	14
G4026-0A	14	G6050-0A	14	ZSA14002	4、10	ZSB15030	12
G4040-0A	16	G6100-0A	14	ZSA15021	4	ZSB16009	8
G4044-0A	16	G7013-0A	22	ZSB08018	2、8	ZSB18005	4
G4045-0A	16	G7014-0A	22	ZSB09011	2	ZSB36001	2
G4046-0A	16	G7021-0A	22	ZSB09012	12、14	ZSC06001	6
G4047-0A	16	G7022-0A	22	ZSB09017	12、18	ZSC09008	6
G4048-0A	20	G7120-0A	22	ZSB09038	6	ZSD12004	8
G4063-0A	14	G7121-0A	22	ZSB11007	4	ZSF09005	2
G4064-0A	20	G7140-0A	22	ZSB11013	2	ZSF12001	14
G4070-0A	20	G7141-0A	22	ZSB11044	2	ZSF20001	8
G4079-0A	20	IN137X1#90	6、22	ZSB11046	12、16、20	ZSF22001	8
G4106-0A	20	WA069011	22	ZSB11054	8	ZSG09012	6
G4381-0A	18	WA079004	20、22	ZSB11056	4	ZSG12018	10、20
G4382-0A	18	WB051001	16	ZSB11057	2	ZSG12019	18
G4383-0A	18	WC079003	18	ZSB12014	6、20	ZSG12022	16
G4384-0A	18	YB030015	4	ZSB12028	14	ZSG14002	10
G4391-0A	20	YD020010	14	ZSB12029	8	ZSG14003	12
G4392-0A	20	YD020012	6	ZSB12030	2、8	ZSG16012	16
G4393-0A	20	YD030012	2、14	ZSB12032	20	ZSH15001	4、12
G4394-0A	20	YD030014	2	ZSB12033	16	ZSH15002	4
G4395-0A	20	YD030018	12	ZSB12034	12	ZSK09004	6

士 CS-530-3

零件號碼與頁數對照表

NUMERICAL PARTS-LIST

零件號碼 PART NO.	頁數 PAGE	零件號碼 PART NO.	頁數 PAGE	零件號碼 PART NO.	頁數 PAGE	零件號碼 PART NO.	頁數 PAGE
ZSK09006	6						
ZSK11010	8						
ZSK11011	2						
ZSK11013	8						
ZSK12011	18						
ZSK12012	20						
ZSK12013	22						
ZSK14002	2						
ZSK14003	16						
ZSK18007	22						
ZSK18008	22						
ZSL11004	2						
ZSL12003	16、18						
ZSL14004	16						
ZSL14005	16						
ZSL16008	16						
ZSN15001	22						
ZSN16004	18						
ZSN20001	8						
ZSN22001	8						
ZSQ09003	6						